



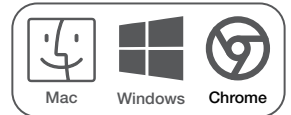
Model: KDHDDP3DL

Universal Docking Station with Triple Display

5 x USB-A, 3 x USB-C, Gigabit Ethernet, Card Reader, Audio & AC Power



User Manual v1.1





Port		Description
<b>1</b>	DC Power Input	Connect the included 120W AC power supply to this port
<b>2</b>	USB-C Host Port	Connect the docking station to your host computer using this USB-C port. Use either the included USB-C to USB-C cable or the included USB-C to USB-A cable
<b>3</b>	RJ45 Gigabit Port	Connect a wired Gigabit Network with an Ethernet cable. The Green LED will illuminate to show a connection has been made with the network, a Yellow LED illuminates when there is network activity
<b>4</b>	DisplayPort	Connect your first monitor to the DisplayPort for maximum single display resolution
<b>5</b>	HDMI Port 1	Connect your second monitor to HDMI 1 for maximum dual display resolution
<b>6</b>	HDMI Port 2	Connect your third monitor to HDMI 2 for triple monitor display
<b>7</b>	4 x USB-A 3.0 Data Ports	Connect USB-A devices including keyboard/mouse, flash drives, a web cam, a printer or external storage devices to these high speed USB-A 3.0 ports at speeds up to 5Gbps
<b>8</b>	2 x USB-C 3.1 Data Ports	Connect USB-C devices including flash drives, a web cam or external storage devices to these high speed USB-C 3.1 ports at speeds up to 5Gbps

**15****9****10****11****12****13****14**


Port		Description
<b>9</b>	USB-A 3.0 Data & Charge	Connect a USB-A device to this port with data transfer speeds up to 5 Gbps. This port can also be used to charge a phone using the BC1.2 charging specification
<b>10</b>	USB-C 3.1 Data & Charge	Connect a USB-C device to this port with data transfer speeds up to 5 Gbps. This port can also be used to charge a phone using the BC1.2 charging specification
<b>11</b>	Micro SD Card	Insert a Micro SD card to access your photos, video and other media
<b>12</b>	SD Card	Insert an SD card to access your photos, video and other media
<b>13</b>	3.5mm Audio Socket	Connect you headphones, headset with microphone or speakers to this port
<b>14</b>	Power Button	Press this button to turn the docking station On or Off
<b>15</b>	Security Slot	Protect your investment and secure your dock using a K-Slot locking device


### Maximum Monitor Resolutions

DisplayPort	HDMI Port 1	HDMI Port 2
3840 x 2160 @30Hz	1920 x 1080 @60Hz	1920 x 1080 @60Hz

## Operation

Connect the included AC power supply to the rear of the docking station and plug the other end into a power outlet.

For computers with a USB-C port, using the included USB-C to USB-C cable, plug one end into a USB-C port on your computer and the other into the USB-C port on the docking station labelled with the computer icon 

This universal docking station will also work with older computers equipped with only a USB-A port. The USB-A port must support USB3.0, also known as USB3.2 Gen 1. When connecting via a USB-A port, the dock will only support dual monitors via HDMI Ports 1 & 2. Connect the docking station to your computer using the included USB-C to USB-A cable. Plug one end into a USB-A port on your computer and the other into the USB-C port on the docking station labelled with the computer icon 

Connect 1, 2 or 3 monitors to the monitor ports. (macOS users see the “DisplayLink Drivers for macOS” section below)

- Using a single monitor, max resolution is 4K Ultra HD 3840 x 2160 @30Hz (must be plugged into DisplayPort)
- Using 2 monitors, the max resolution is 1 x 4K Ultra HD 3840 x 2160 @30Hz and 1 x HD 1920 x 1080 @60Hz
- Using 3 monitors, the max resolution is 1 x 4K Ultra HD 3840 x 2160 @30Hz and 2 x HD 1920 x 1080 @60Hz

Connect your USB-A and USB-C devices to the USB-A and USB-C ports on the front and back of the docking station such as USB flash drives, external storage devices, webcams or other USB peripherals. The maximum data transfer rate is 5Gbps.

You can also use the USB-A and USB-C ports on the front of the dock to charge your phone and other USB devices using the BC1.2 charging specification.

Connect an Ethernet network cable to the RJ45 Gigabit LAN port. This will connect your computer to a wired Ethernet network. The green LED indicates connection to a network. The yellow LED indicates network activity.

Use either the SD or Micro SD slots on the front of the dock to access your photos, videos or other digital files.


To listen to audio through speakers or headphones, or use a headset with microphone, connect to the 3.5mm audio socket on the front of the dock.

## DisplayLink Drivers for macOS

The DisplayPort uses USB-C DisplayPort Alternate Mode (also called DP-Alt Mode) to display video and should work as plug and play on macOS, Windows and ChromeOS with no additional drivers required.

HDMI Ports 1 & 2 require the host computer to have DisplayLink drivers installed to support external monitors. Windows and ChromeOS support DisplayLink natively and don't need additional drivers installed to run external monitors.

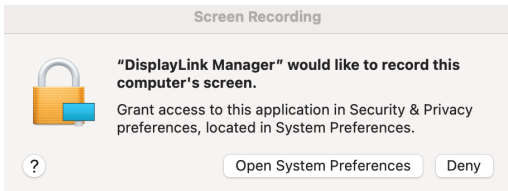
**Note:** macOS users will need to install DisplayLink drivers to run external monitors on HDMI Ports 2 & 3. DisplayLink drivers are available for MacOS X 10.8 onwards. For optimum performance it is recommended to download and install the latest version of DisplayLink Manager (includes DisplayLink drivers) with support for macOS Catalina 10.15 onwards.

1. Visit [www.synaptics.com/products/displaylink-graphics](http://www.synaptics.com/products/displaylink-graphics) and select macOS from the Latest DisplayLink Drivers list
2. Download the latest version of “DisplayLink Manager”
3. After clicking “Download” and accepting the License, double click the downloaded file and run the DisplayLink Installer Wizard
4. Follow the on screen instructions to complete the installation
5. Make sure your external monitors are connected to the multiport adapter via a HDMI cable
6. From the Notification Center (normally top right on your Mac) start the DisplayLink Manager for the first time by clicking this icon 

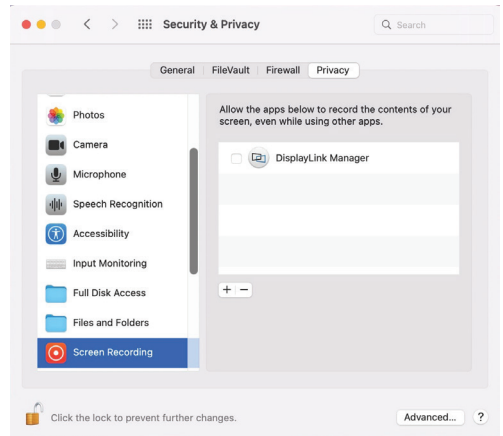
The DisplayLink Manager can also be found in the Applications folder

Turn over to complete installation

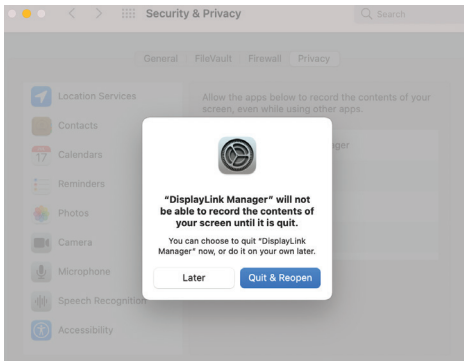
7. When you run the DisplayLink manager for the first time this box will display. This a necessary function of DisplayLink however no data is permanently recorded or exported. To proceed click “Open System Preferences”



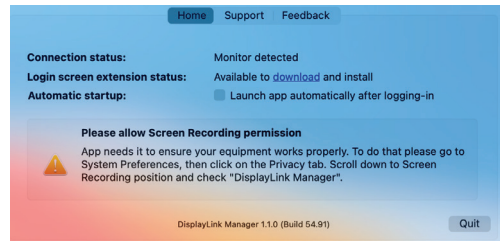
8. If the lock in the bottom left corner of the “Security & Privacy” window is locked, then click to unlock it and ensure that you check the box next to the DisplayLink Manager to enable Screen recording



9. When this message appears, click the “Quit & Reopen” button and your external monitors should start working



10. To make DisplayLink run automatically, open the DisplayLink Manager app from the Notification Centre or Application folder and check the “Automatic startup” box



## Specifications

- Connect three monitors, a keyboard & mouse, USB storage devices, a Gigabit network, headphones or speakers and other USB devices all via a single USB-C connection
- Hybrid DisplayLink technology supports triple monitors in mirror or extended desktop mode for macOS, Windows and ChromeOS, including MacBooks with M1, M2 or Intel chips
- Included 120W power supply provides up to 85W of USB-C power to charge your laptop
- Supports triple monitors at Full HD 1920 x 1080 @60Hz
- 2 x HDMI monitor ports & 1 x DisplayPort
- 5 x USB-A 3.0 and 3 x USB-C 3.1 data ports (5Gbps)
- 1 x RJ45 Gigabit Ethernet network port
- 1 x SD & 1 x Micro SD Card Reader Slot that supports SD, SDHC I/II/III and SDXC I/II/III at UHS-I high speeds
- 1 x 3.5mm audio port for headphones or speakers
- 1 x USB-C female port to connect to host computer
- 1 x Security Locking Slot
- Dimensions: 215 x 80 x 26mm
- Weight: 426g

## In the Box

- 1 x KDHDDP3DL Universal Docking Station
- 1 x 120W AC Power Adapter
- 1 x 1m USB-C to USB-C Cable
- 1 x 1m USB-C to USB-A Cable
- 1 x User Manual

## Trouble Shooting

### Monitors not Working

For the monitor connected to the DisplayPort, this docking station uses a technology called DisplayPort Alternate Mode (also called DP Alt-Mode) to send your computer's video signal to the monitor. If the monitor connected to the DisplayPort is not working, your computer's USB-C port may not support DP Alt-Mode. If your computer doesn't support DP Alt-Mode or you are using USB-A to connect the dock to your computer, this dock will only support dual monitors from HDMI Ports 1 & 2.

Please check with your computer's specifications to see if your computer's USB-C port supports DP Alt-Mode. All USB-C ports look physically the same and some manufacturers label their USB-C ports to indicate if they support DP Alt-Mode or not, however many do not have any labels at all. Your owner's manual or the manufacturer's website will help you find if your computer's USB-C port supports DP Alt-Mode. If your computer's USB-C port supports Thunderbolt 3 or Thunderbolt 4, then it also supports DP Alt-Mode and will work with this docking station.

### Laptop Charging not working

If you are connecting to a laptop using a USB-A port, the docking station will not provide power to charge the laptop. You must charge your laptop using its own power supply.

### Connection Issues

If you are experiencing connection problems, unplug the docking station from your computer and replug or unplug the connection that is experiencing problems and replug.

USB-C is a trademark of USB Implementers Forum.

HDMI is a registered trademark of HDMI Licensing LLC in the United States and other countries.

Windows is a registered trademark of Microsoft Corporation in the United States and other countries.

Mac and MacBook & macOS are trademarks of Apple Inc. registered in the U.S. and other countries.

Chromebook is a trademark of Google Inc.

